

**M3097DE/DG**  
**IMAGE SCANNER**  
**ILLUSTRATED PARTS CATALOGUE**

REVISION RECORD		
Edition	Date published	Revised contents
01	November, 1997	First edition
Specification NO.: C150-G007-01EN		

The contents of this manual is subject to change without prior notice

All Rights Reserved Copyright © 1997 FUJITSU LIMITED

## HOW TO USE THIS MANUAL

### ILLUSTRATION

The illustration gives an exploded view of an assembly, and separate parts and how they fit together. Each part has a number corresponding to an Index No. on the parts list.

### PARTS LIST

#### (1) INDEX NO.

The number which corresponds with a part's number in the illustration.

- When the mark “ \* ” precedes the index number, the parts is a recommended spare parts or a consumables.
- When a “ - ” is given, the part (screw or washer) is not shown in the illustration.
- When blank, and the QUANTITY and SPECIFICATION are given, a whole of that part is not shown in the illustration or that part is illustrated for detail breakdown in the other page.

#### (2) COMPOSITION & QUANTITY

These columns are shown the relationship between units, assemblies, subassemblies, and parts. A unit indicated in a column is assembled the parts indicated in the next right column. The figure is the quantity needed to assemble into on higher assembled unit.

#### (3) SPECIFICATIONS

Part number of the units, assemblies, subassemblies, or parts.

#### (4) DESCRIPTION

The part name, applicable device number, and other information are given in this column.

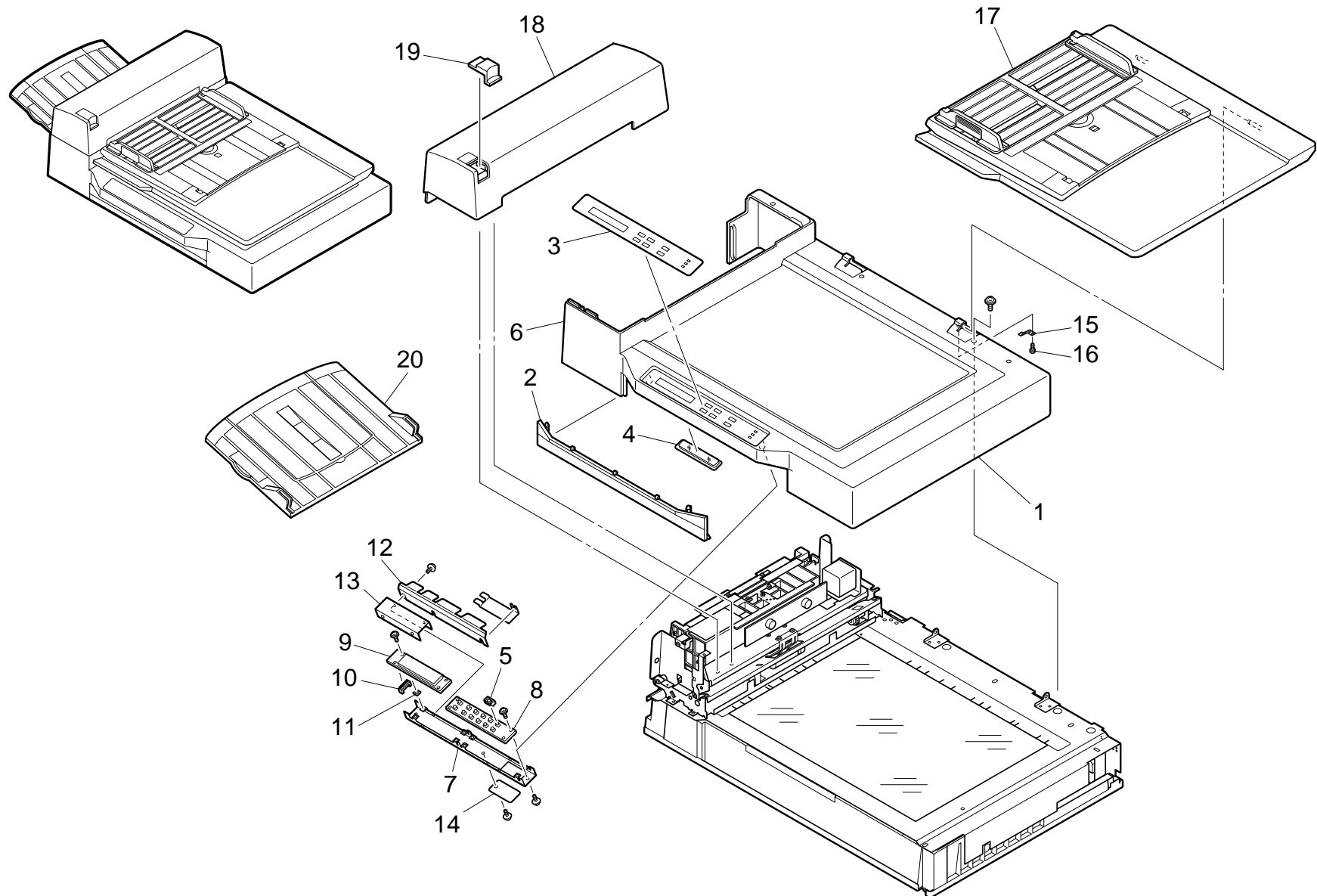
### OTHERS

The parts other than the parts marked with “ \* ” in INDEX NO. column are listed in SPARE PARTS LIST REPAIR.

**CONTENTS**

		<b>Page</b>
	<b>M3097DE/DG</b>	
FIGURE 1	FINAL ASSEMBLY-1 .....	1
FIGURE 2	FINAL ASSEMBLY-2 .....	3
FIGURE 3	PLATE and PCA ASSEMBLY .....	5
FIGURE 4	CARRIER UNIT .....	9
FIGURE 5	ADF ASSEMBLY .....	11
FIGURE 6	OPTICAL UNIT .....	15
FIGURE 7	DOCUMENT COVER ASSEMBLY .....	17

**FIGURE 1. FINAL ASSEMBLY-1**



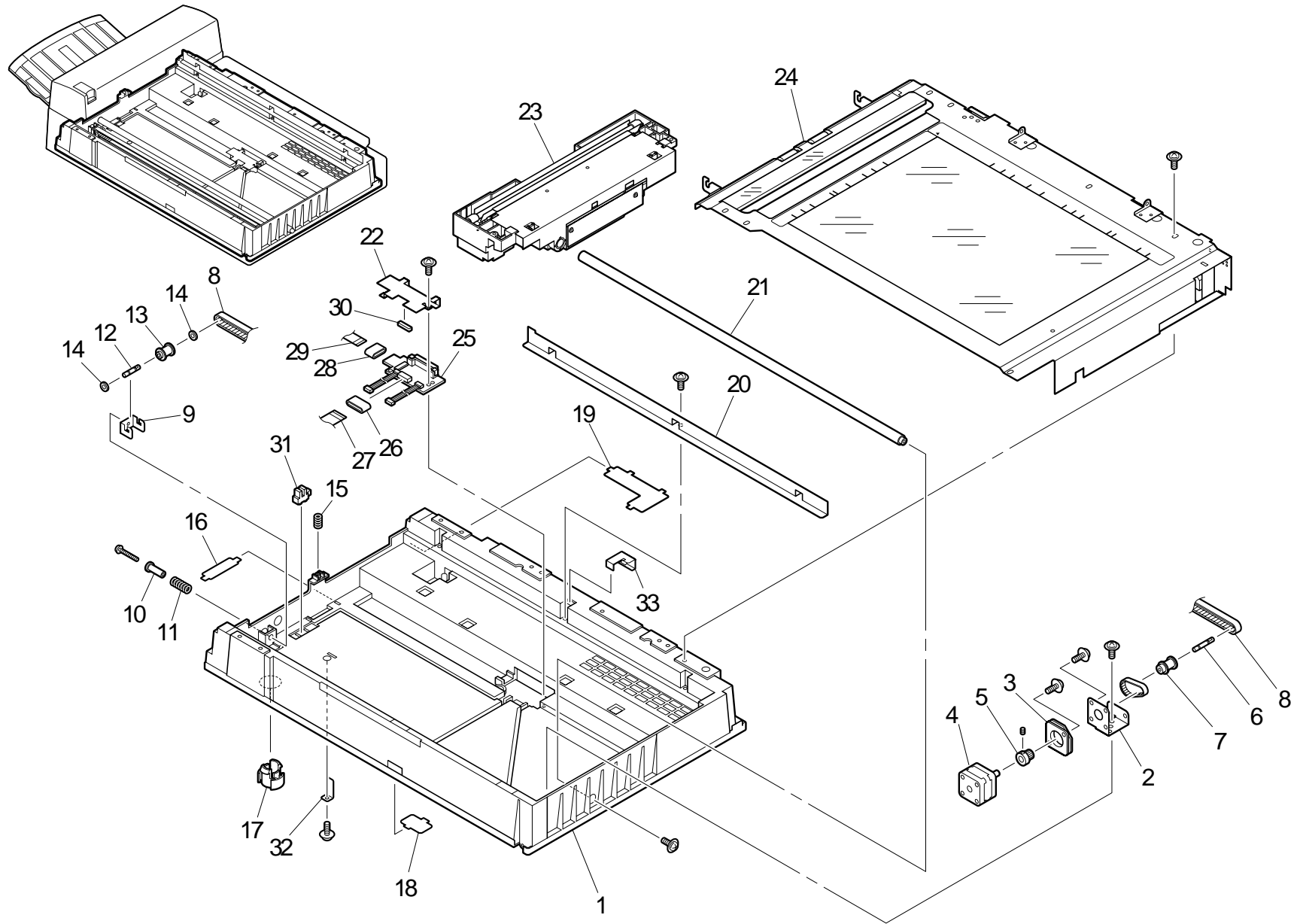
**FIGURE 1. FINAL ASSEMBLY-1**

INDEX NO.	COMPOSITION & QUANTITY				SPECIFICATION	DESCRIPTION
1					CA04235-4202	M3097DE Image Scanner (100V)
1					CA04235-4203	M3097DE Image Scanner (200V)
1					CA04235-4204	M3097DE Image Scanner (100V, USA, IPC-2D)
1					CA04235-4225	M3097DG Image Scanner (100V, USA, IPC-3D)
1					CA04235-4222	M3097DG Image Scanner (100V)
1					CA04235-4223	M3097DG Image Scanner (200V)
1					CA04235-4224	M3097DE Image Scanner (200V, USA, IPC-2D)
1					CA04235-4205	M3097DE Image Scanner (100V, USA, IPC-3D)
	1				PA3001-E006	Upper cover ASY
1		1				
2		1				
3		1			PA03001-Y014	Sheet
4		1				
5		12				
-		3				
6		1				
-		1				
-		1				
*		3				
7		1			PA03001-D003	Console unit
-		4				
8		1				
9		1				
-		4				
10		1				
11		2				
12		1				
-		3				
13		1				
-		2				
14		1				
-		1				

**FIGURE 1. FINAL ASSEMBLY-1**

INDEX NO.	COMPOSITION & QUANTITY				SPECIFICATION	DESCRIPTION
-		3				
15		1				
16		1				
*17		1			PA03002-D021	Document cover ASY (FIG-6)
18		1			PA03001-Y024	ADF cover
-		2				
19		1			PA03001-Y027	ADF lever
-		1				
20		1			PA02212-E352	Stacker (FIG-6)

FIGURE 2. FINAL ASSEMBLY-2



**FIGURE 2. FINAL ASSEMBLY-2**

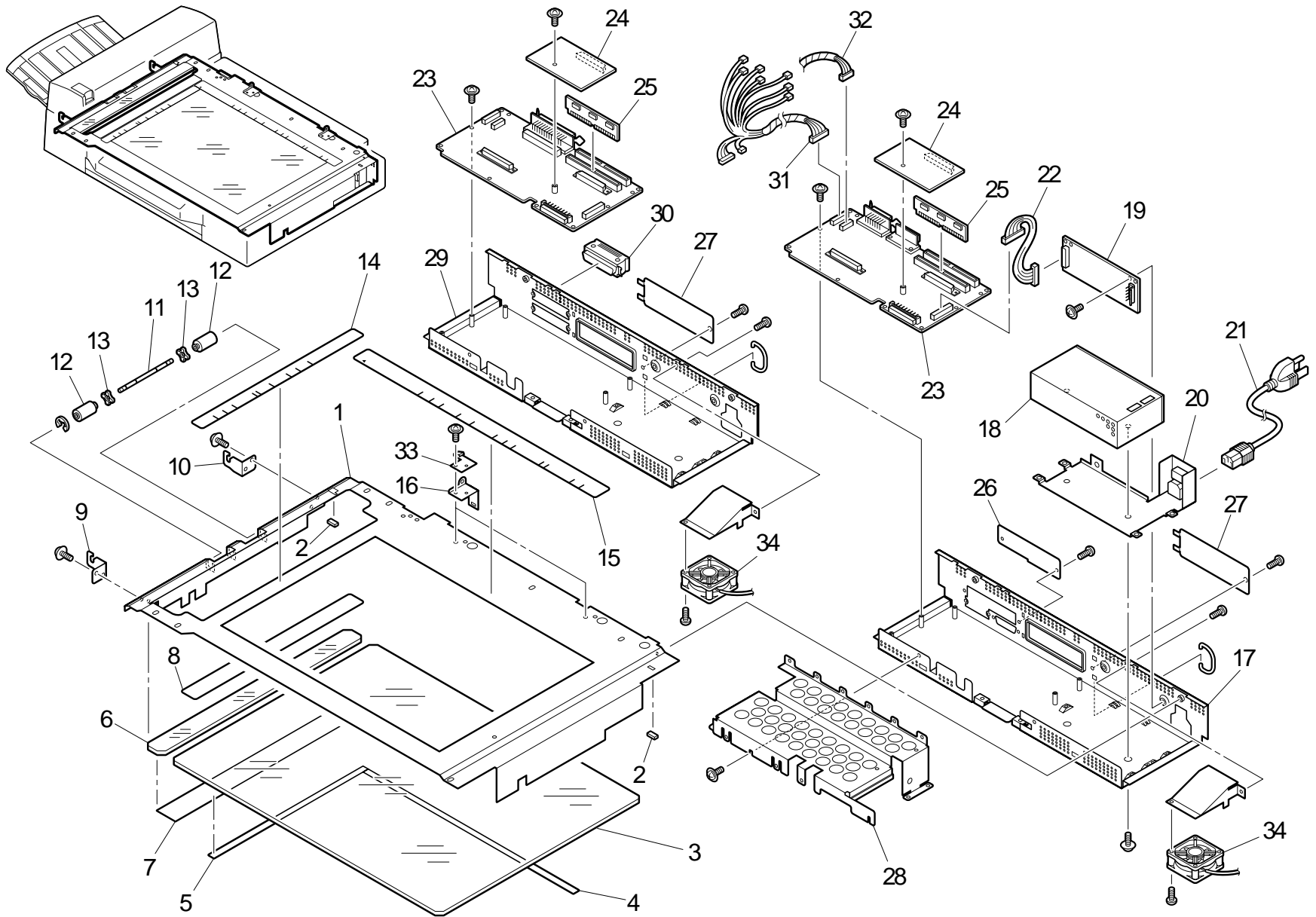
INDEX NO.	COMPOSITION & QUANTITY				SPECIFICATION	DESCRIPTION
1	1				CA04235-4202	M3097DE Image Scanner (100V)
1	1				CA04235-4203	M3097DE Image Scanner (200V)
1	1				CA04235-4204	M3097DE Image Scanner (100V, USA, IPC-2D)
1	1				CA04235-4225	M3097DG Image Scanner (100V, USA, IPC-3D)
1	1				CA04235-4222	M3097DG Image Scanner (100V)
1	1				CA04235-4223	M3097DG Image Scanner (200V)
1	1				CA04235-4224	M3097DG Image Scanner (100V, USA, IPC-2D)
1	1				CA04235-4205	M3097DE Image Scanner (100V, USA, IPC-3D)
1	1	1			PA02212-F361	FB Motor unit
*		1				
2			1			
-			2			
3			1			
4			1			
5			1			
-			2			
-		2				
6		1				
7			1			
8			1			
9		1				
10		1			PA002201-Y506	Collar
-		1				
11		1			PA02201-Y512	ADJ spring
12		1			PA02201-Y972	ADJ shaft
13		1			PA02201-Y971	ADJ Pulley
14		2			U120-4300-Z817	Spacer
15		1			PA02201-Y582	Spring
16		1			PA02201-Y691	Sheet B
17		4			PA03002-Y070	Foot
18		1			PA02201-Y692	Sheet C
19		1			PA02201-Y690	Sheet A
20		1			PA02201-Y890	CR Rail

**FIGURE 2. FINAL ASSEMBLY-2**

INDEX NO.	COMPOSITION & QUANTITY				SPECIFICATION	DESCRIPTION
-			3			
21			1			
-			1			
22			1			
-			1			
23			1		PA03001-E003	Carrier unit (FIG-4)
24			1		PA03001-E009	Plate ASY (FIG-3)
-			2			
25			1		PA20208-B23X	Junction PCA
26			1			
27			1		PA70001-0950	CSL Cable
28			1			
29			1		PA70001-0814	CR Cable
30						
31			1		PA47003-0018	Sensor
32			1		PA02201-Y500	Metal fitting
33			1		PA02201-Y989	FG Spring



**FIGURE 3. PLATE & PCA ASSEMBLY**



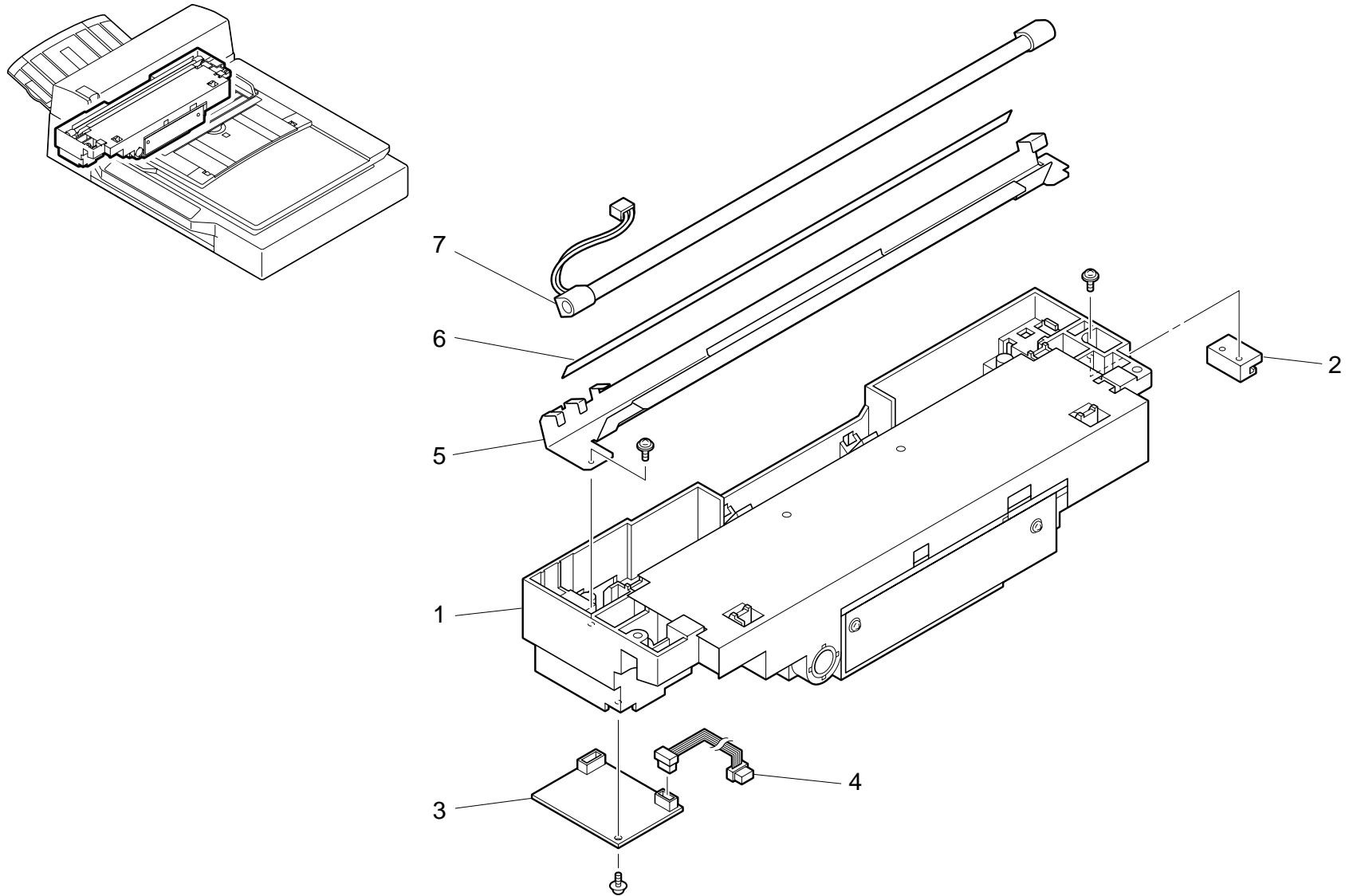
**FIGURE 3. PLATE & PCA ASSEMBLY**

INDEX NO.	COMPOSITION & QUANTITY				SPECIFICATION	DESCRIPTION
	1				PA03001-E009	Plate ASY
1		1				
2		2				
3		1				
4		1				
5		1				
6		1				
7		1				
8		1				
9		1			PA02201-Y693	Metal fitting
-		1				
10		1			PA02201-Y694	Metal fitting
-		1				
11		1				
-		1				
12		2			RU6ER3-S	E ring
13		2			PA02212-Y092	Roller
14		2			PA02201-Y695	HK ring V2
15		1				
16		1				
-		2			PA02201-Z024	Metal fitting
-		2				
17	1					(for CA404235-4202/4203/4204/4205)
	-		2			
	1					
*	1				PA03002-D026	Power Supply
18		1				
19		1				
20		1				
21	1				PA98201-0185	AC cable (for CA404235-4202/4204/4205/4222/4224/4225)
21	1				PA98201-0186	AC cable (for CA04235-4203/4223)
22	1				PA70001-0948	DC cable
*23	1				PA20208-B19X	Control PCA (for CA04235-4202/4203/4204/4205)

**FIGURE 3. PLATE & PCA ASSEMBLY**

INDEX NO.	COMPOSITION & QUANTITY				SPECIFICATION	DESCRIPTION
*23	1				PA20208-B20X	Control PCA (for CA04235-4222/4223/4224/4225)
-	5					
-	2					
24	1				CA01952-0192	IPC-2D (Option)
24	1				CA02919-0511	IPC-3D (Option)
-	1					
*25	1				PA46006-6225	Memory PCA
26	1				PA02212-Y180	Metal fitting (for CA04235-4202/4203/4204)
	2					
27	1				PA02212-Y184	SIMM Cover
	1					
28	1				PA03001-Y003	Cover (for CA04235-4222/4223/4224/4225)
29	1					
30	1				R40L-2100-0003	Terminator plug (for CA04235-4222/4223/4224/4225)
31					PA70002-0006	ADF Cable
32	1				PA70001-0691	CCD Cable
33	1				PA02201-Z023	Spring
34	1				PA03001-E028	Fan

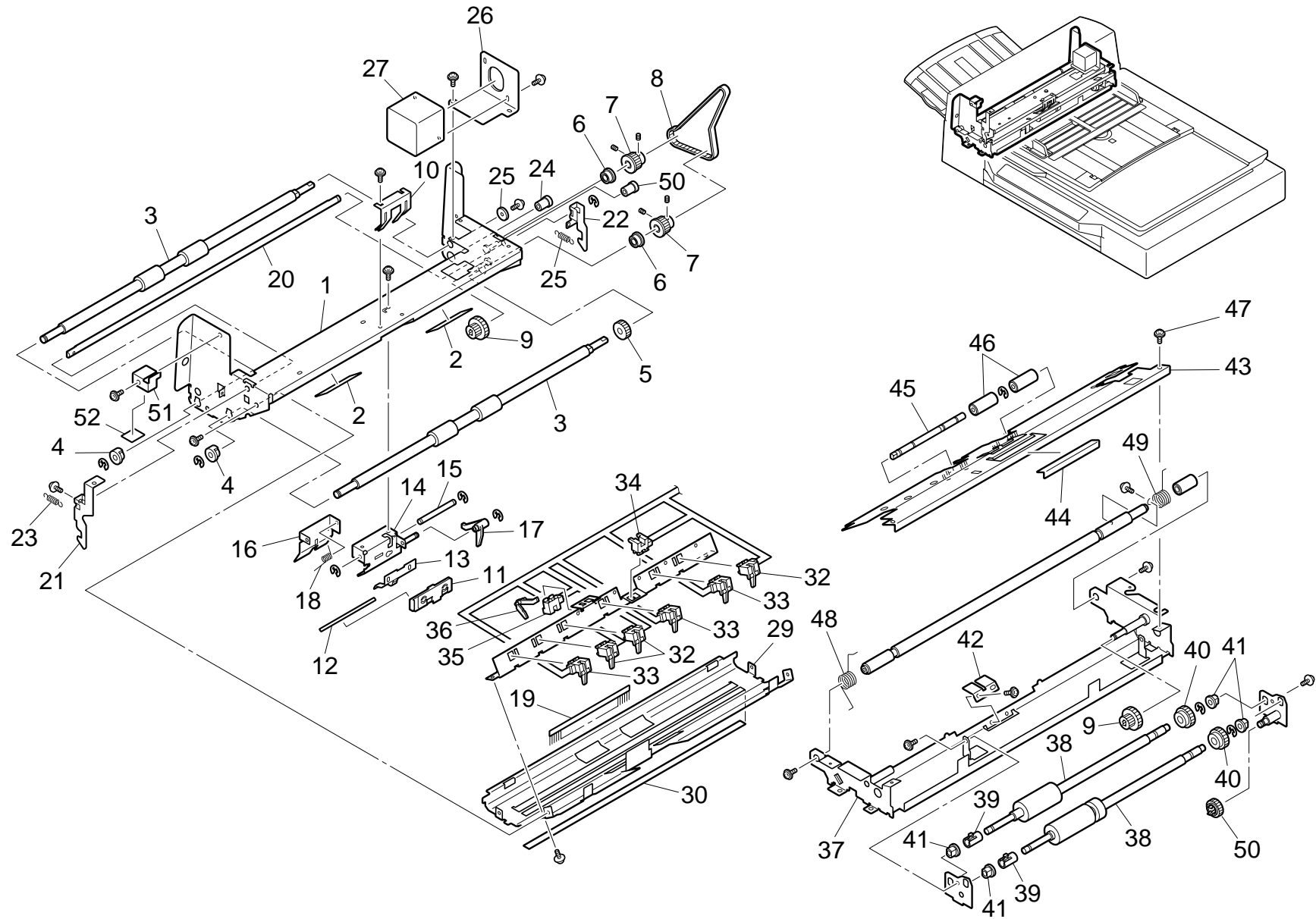
**FIGURE 4. CARRIER UNIT**



**FIGURE 4. CARRIER UNIT**

INDEX NO.	COMPOSITION & QUANTITY					SPECIFICATION	DESCRIPTION
*	1					PA03001-E003	Carrier unit
1			1				
2			1			U110-8100-Z147	CRB dushing
3		1				PA54001-0025	Lamp inverter
-		1					
4		1					
*		1				PA02212-F381	Front lamp
5			1				
-			1				
6			1				
7			1				
-		2					

FIGURE 5. ADF ASSEMBLY



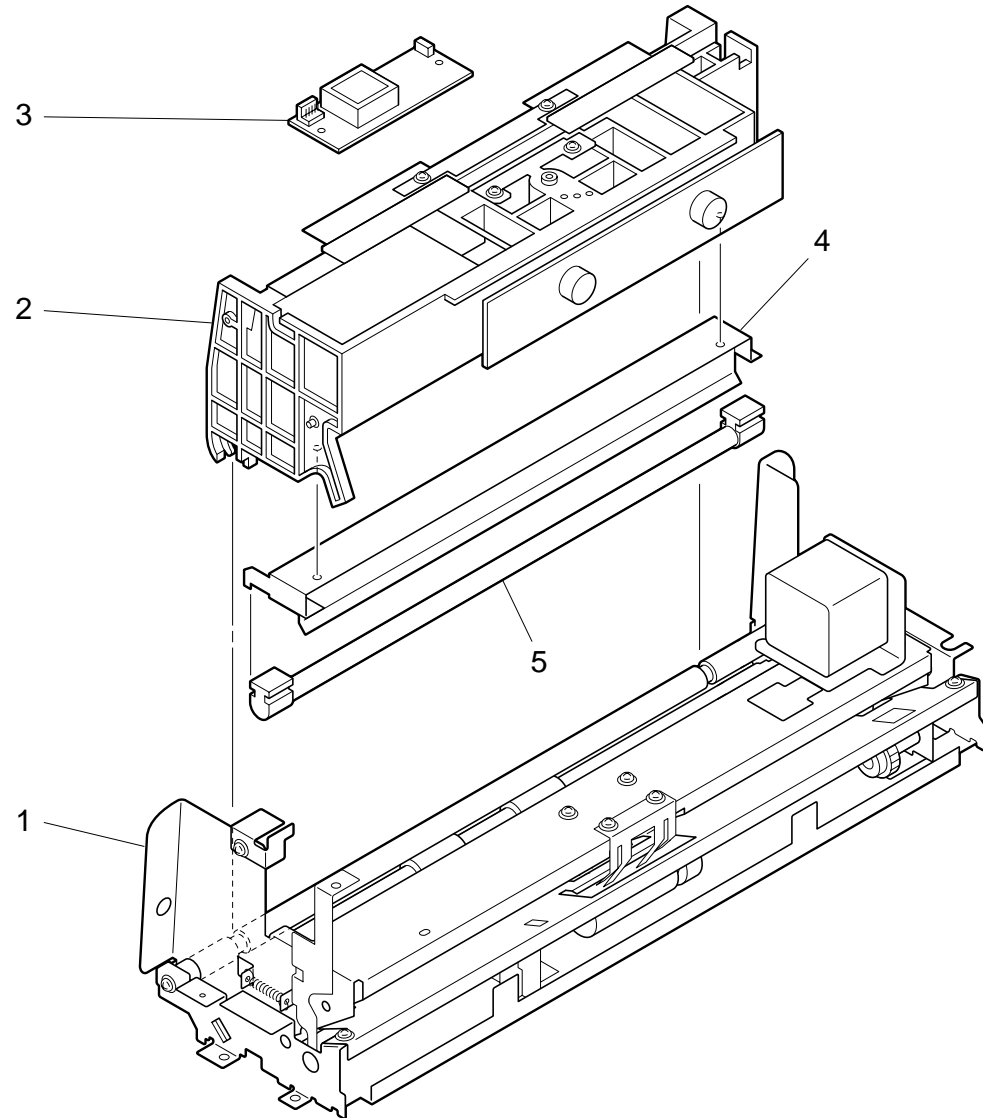
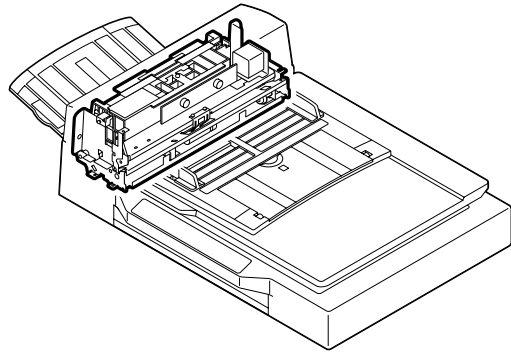
**FIGURE 5. ADF ASSEMBLY**

INDEX NO.	COMPOSITION & QUANTITY				SPECIFICATION	DESCRIPTION
*	1				PA03002-D023	ADF unit
1		1				
2		1				
3		2			PA02201-Y526	Shaft
4		2			U120-4100-Z601	Bearing
-		2			RU6ER4-S	E ring
5		1			U110-8032-Z362	Gear
6		2				
7		2				
-		4				
*8		1			U30L-5010-0051#145-8.0	ADF Belt
9		2			U110-8038-Z398	Reduction gear
10		1			PA03002-Y050	Pick spring
*		1			PA03951-0021	Pad ASY
11			1			
12			1			
13			1			
14		1			PA03002-G011	Pad frame
-		2				
15		2			PA03002-Y043	Pad shaft
-		2			RU6ER2-S	E ring
16		1			PA03002-Y044	Pad plate
17		1			PA03002-Y046	EMP arm
18		1			PA03002-Y045	Pad spring
-		1				
19		1			PA02212-Y235	Diselectric sheet
20		1			PA02201-Y543	Shaft
21		1			PA03001-Y023	Lever
-		1				
22		1			PA03002-Y052	Lever
-		1			RU6ER4-S	E ring
23		2			PA02201-Y546	Spring
24		1				
25		1			PA02201-Y549	Coller
-		1				
26			1			
*		1			PA83950-0014	ADF motor unit
-			2			
27			1			
28			1			
-			2			
-		2				

**FIGURE 5. ADF ASSEMBLY.**

INDEX NO.	COMPOSITION & QUANTITY				SPECIFICATION	DESCRIPTION
29		1				
-		4				
30		1				
*		1			PA03951-0024	Sensor unit
31			1			
32			3			
33			3			
34			1			
35			1			
36			1		PA02212-Y217	Top ARM
37		1				
*38		1			PA03951-0025	Pick roller
39			2			
40			2			
-			2			
41			4			
42		1			PA03002-Y057	Spring
-		2				
*		1			PA03951-0022	Guide A ASY
43			1			
44			1			
45			1			
46			1			
-			1		RU6ER3-S	E ring
47		2			PA82900-0320	Thumb screw
-	4					
48		1			PA02212-Y220	Spring
49		1			PA02212-Y221	Spring
50		1			PA03002-Y056	Idler
51		1			PA03002-Y067	Metal fitting
52		1			PA03002-Y068	Sheet

**FIGURE 6. OPTICAL UNIT**

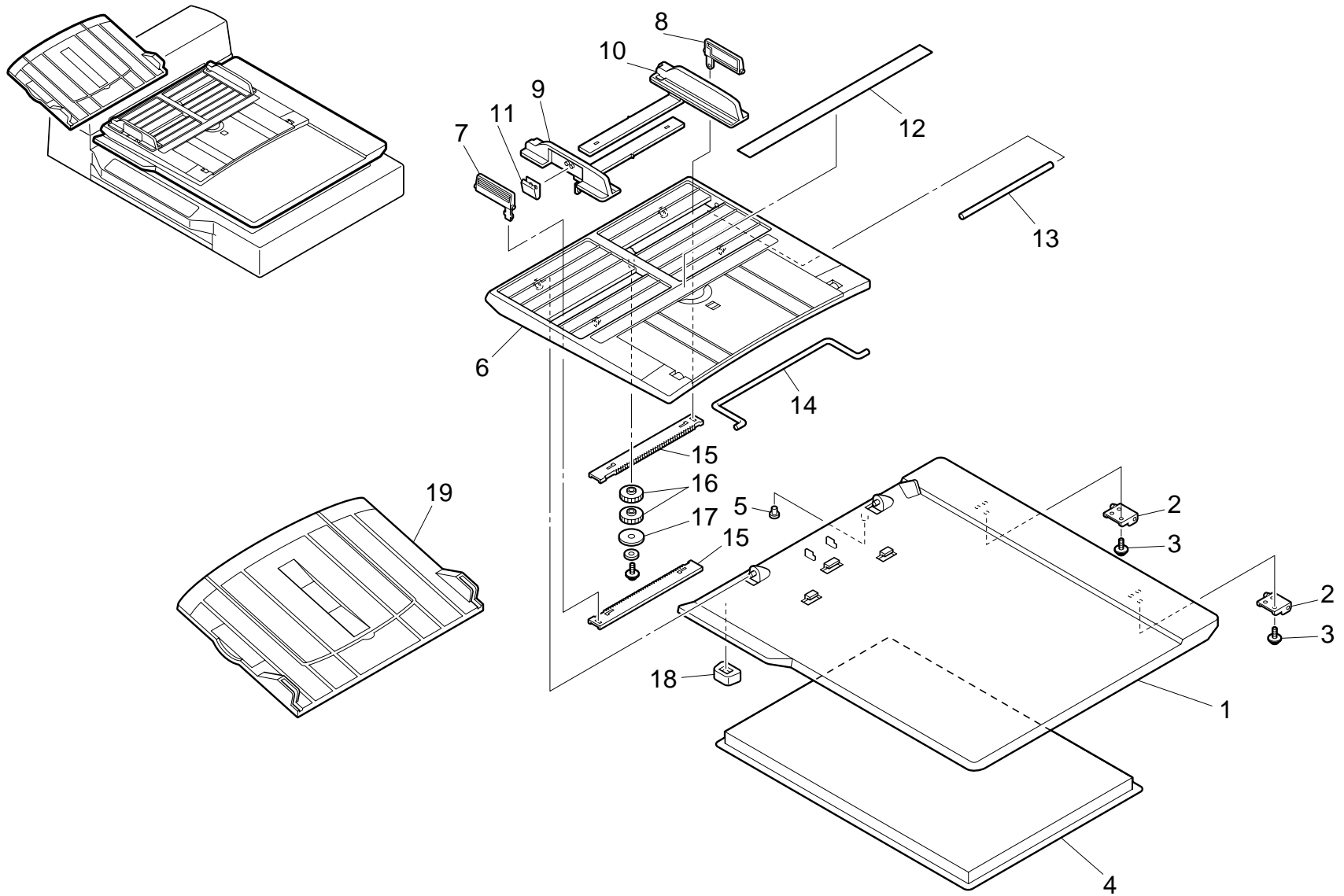


**FIGURE 6. OPTICAL UNIT**

INDEX NO.	COMPOSITION & QUANTITY					SPECIFICATION	DESCRIPTION
*1	1					PA03002-D023	ADF unit
*2	1					PA03002-D024	Optical UNIT
3		1				PA54001-0021	Lamp inverter
*	1					PA03002-D027	Back lamp
4		1					
5		1					



FIGURE 7. DOCUMENT COVER ASSEMBLY



**FIGURE 7. DOCUMENT COVER ASSEMBLY**

INDEX NO.	COMPOSITION & QUANTITY				SPECIFICATION	DESCRIPTION
*	1	1			PA03002-D021	Document cover ASY
1		1			PA02201-E120	Document cover ASY
2		2				
3		4				
4		1				
5		1				
6	1	1			PA02201 E005	Paper chute ASY
7		1				
8		1				
9		1				
10		1				
11		1				
12		1				
13		1				
14		1				
15		2				
16		2				
17		1				
18		1			PA02201-Y819	Rubber
-		1				
-		1				
19	1				PA02212-E352	Stacker

FUJITSU